



Test Report

Report No. A222015438710102

Page 1 of 10

Company Name shown on Report JIANGSU MICRO COMMERCIAL COMPONENTS CO., LTD
Address NO.6, WEST HEYE ROAD, WEIYANG ECONOMIC DEVELOPMENT ZONE, HANJIANG, YANGZHOU, JIANGSU, CHINA

The following sample(s) and sample information was/were submitted and identified by/on the behalf of the applicant

Sample No.	Sample Name(s)	Material
001	Module	银色金属
002		白色固体
003		透明软固体
004		高温焊片

Sample Received Date Apr. 22, 2022
Testing Period Apr. 22, 2022 to Apr. 26, 2022

Test Requested As specified by client, to test Lead (Pb), Cadmium (Cd), Mercury (Hg), Hexavalent Chromium (Cr(VI)), Polybrominated Biphenyls (PBBs), Polybrominated Diphenyl Ethers (PBDEs), Phthalates (DBP, BBP, DEHP, DIBP) in the submitted sample(s).

Test Method/Test Result(s) Please refer to the following page(s).

Conclusion

Tested Sample	According to standard/directive	Result
Submitted Sample	RoHS Directive 2011/65/EU with amendment (EU) 2015/863	PASS

PASS means that the results shown on the report comply with the limits set by RoHS Directive 2011/65/EU with amendment (EU) 2015/863.

Tested by Guoqing Dai Reviewed by Guomei Feng

Approved by Wenjun Wang Date Apr. 29, 2022



Wenjun Wang
Technical Director

No. R200821941

Centre Testing International Group Co., Ltd. Shunde Branch
Yongying Building, Section 2, No.8, East of Rongqi Avenue, Ronggui, Shunde District, Foshan, Guangdong, China

Test Report

Report No. A222015438710102

Page 2 of 10

Test Method

Tested Item(s)	Test Method	Measured Equipment(s)
Lead (Pb)	IEC 62321-5:2013*	ICP-OES
Cadmium (Cd)	IEC 62321-5:2013	ICP-OES
Mercury (Hg)	IEC 62321-4:2013+AMD1:2017 CSV	ICP-OES
Hexavalent Chromium (Cr(VI))	IEC 62321-7-1:2015	UV-Vis
	IEC 62321-7-2:2017 and/or determination of Total Chromium by IEC 62321-5:2013	UV-Vis/ICP-OES
Polybrominated Biphenyls (PBBs)	IEC 62321-6:2015	GC-MS
Polybrominated Diphenyl Ethers (PBDEs)	IEC 62321-6:2015	GC-MS
Phthalates (DBP, BBP, DEHP, DIBP)	IEC 62321-8:2017	GC-MS

Test Result(s)

Tested Item(s)	Result			MDL	Limit
	001	002	003		
Lead (Pb)	14 mg/kg	N.D.	N.D.	2 mg/kg	1000 mg/kg
Cadmium (Cd)	N.D.	N.D.	N.D.	2 mg/kg	100 mg/kg
Mercury (Hg)	N.D.	N.D.	N.D.	2 mg/kg	1000 mg/kg
Hexavalent Chromium (Cr(VI))	--	N.D.	N.D.	8 mg/kg	1000 mg/kg
	N.D. ▼	--	--	0.10 µg/cm ² (LOQ)	1000 mg/kg

Tested Item(s)	Result	MDL	Limit
	004		
Lead (Pb)	965400 mg/kg ^{#1, #2}	2 mg/kg	1000 mg/kg
Cadmium (Cd)	N.D.	2 mg/kg	100 mg/kg
Mercury (Hg)	N.D.	2 mg/kg	1000 mg/kg
Hexavalent Chromium (Cr(VI))	--	8 mg/kg	1000 mg/kg
	N.D. ▼	0.10 µg/cm ² (LOQ)	1000 mg/kg

Test Report

Report No. A222015438710102

Page 3 of 10

Tested Item(s)	Result		MDL	Limit
	002	003		
Polybrominated Biphenyls (PBBs)				
Monobromobiphenyl	N.D.	N.D.	5 mg/kg	1000 mg/kg
Dibromobiphenyl	N.D.	N.D.	5 mg/kg	
Tribromobiphenyl	N.D.	N.D.	5 mg/kg	
Tetrabromobiphenyl	N.D.	N.D.	5 mg/kg	
Pentabromobiphenyl	N.D.	N.D.	5 mg/kg	
Hexabromobiphenyl	N.D.	N.D.	5 mg/kg	
Heptabromobiphenyl	N.D.	N.D.	5 mg/kg	
Octabromobiphenyl	N.D.	N.D.	5 mg/kg	
Nonabromobiphenyl	N.D.	N.D.	5 mg/kg	
Decabromobiphenyl	N.D.	N.D.	5 mg/kg	

Tested Item(s)	Result		MDL	Limit
	002	003		
Polybrominated Diphenyl Ethers (PBDEs)				
Monobromodiphenyl ether	N.D.	N.D.	5 mg/kg	1000 mg/kg
Dibromodiphenyl ether	N.D.	N.D.	5 mg/kg	
Tribromodiphenyl ether	N.D.	N.D.	5 mg/kg	
Tetrabromodiphenyl ether	N.D.	N.D.	5 mg/kg	
Pentabromodiphenyl ether	N.D.	N.D.	5 mg/kg	
Hexabromodiphenyl ether	N.D.	N.D.	5 mg/kg	
Heptabromodiphenyl ether	N.D.	N.D.	5 mg/kg	
Octabromodiphenyl ether	N.D.	N.D.	5 mg/kg	
Nonabromodiphenyl ether	N.D.	N.D.	5 mg/kg	
Decabromodiphenyl ether	N.D.	N.D.	5 mg/kg	

Test Report

Report No. A222015438710102

Page 4 of 10

Tested Item(s)	Result		MDL	Limit
	002	003		
Phthalates (DBP, BBP, DEHP, DIBP)				
Butyl benzyl phthalate (BBP) CAS#:85-68-7	N.D.	N.D.	50 mg/kg	1000 mg/kg
Di-(2-ethylhexyl) phthalate (DEHP) CAS#:117-81-7	N.D.	N.D.	50 mg/kg	1000 mg/kg
Dibutyl phthalate (DBP) CAS#:84-74-2	N.D.	N.D.	50 mg/kg	1000 mg/kg
Diisobutyl phthalate (DIBP) CAS#:84-69-5	N.D.	N.D.	50 mg/kg	1000 mg/kg

Tested Item(s)	Result		MDL	Limit
	001	004		
Polybrominated Biphenyls (PBBs) *				
Monobromobiphenyl	N.D.	N.D.	5 mg/kg	1000 mg/kg
Dibromobiphenyl	N.D.	N.D.	5 mg/kg	
Tribromobiphenyl	N.D.	N.D.	5 mg/kg	
Tetrabromobiphenyl	N.D.	N.D.	5 mg/kg	
Pentabromobiphenyl	N.D.	N.D.	5 mg/kg	
Hexabromobiphenyl	N.D.	N.D.	5 mg/kg	
Heptabromobiphenyl	N.D.	N.D.	5 mg/kg	
Octabromobiphenyl	N.D.	N.D.	5 mg/kg	
Nonabromobiphenyl	N.D.	N.D.	5 mg/kg	
Decabromobiphenyl	N.D.	N.D.	5 mg/kg	

Test Report

Report No. A222015438710102

Page 5 of 10

Tested Item(s)	Result		MDL	Limit
	001	004		
Polybrominated Diphenyl Ethers (PBDEs) *				
Monobromodiphenyl ether	N.D.	N.D.	5 mg/kg	1000 mg/kg
Dibromodiphenyl ether	N.D.	N.D.	5 mg/kg	
Tribromodiphenyl ether	N.D.	N.D.	5 mg/kg	
Tetrabromodiphenyl ether	N.D.	N.D.	5 mg/kg	
Pentabromodiphenyl ether	N.D.	N.D.	5 mg/kg	
Hexabromodiphenyl ether	N.D.	N.D.	5 mg/kg	
Heptabromodiphenyl ether	N.D.	N.D.	5 mg/kg	
Octabromodiphenyl ether	N.D.	N.D.	5 mg/kg	
Nonabromodiphenyl ether	N.D.	N.D.	5 mg/kg	
Decabromodiphenyl ether	N.D.	N.D.	5 mg/kg	

Tested Item(s)	Result		MDL	Limit
	001	004		
Phthalates (DBP, BBP, DEHP, DIBP) *				
Butyl benzyl phthalate (BBP) CAS#:85-68-7	N.D.	N.D.	50 mg/kg	1000 mg/kg
Di-(2-ethylhexyl) phthalate (DEHP) CAS#:117-81-7	N.D.	N.D.	50 mg/kg	1000 mg/kg
Dibutyl phthalate (DBP) CAS#:84-74-2	N.D.	N.D.	50 mg/kg	1000 mg/kg
Diisobutyl phthalate (DIBP) CAS#:84-69-5	N.D.	N.D.	50 mg/kg	1000 mg/kg

Test Report

Report No. A222015438710102

Page 6 of 10

Sample/Part Description

001	Silvery metal
002	White plastic
003	Transparent glue
004	Silvery metal

Remark: The sample(s) had been dissolved totally tested for Lead, Cadmium, Mercury.

-MDL = Method Detection Limit

-N.D. = Not Detected (<MDL or LOQ)

-mg/kg = ppm = parts per million

-1000 mg/kg = 0.1%

-LOQ = Limit of Quantification, The LOQ of Hexavalent chromium is 0.10 $\mu\text{g}/\text{cm}^2$ -▼The sample is negative for Cr(VI) – The Cr(VI) concentration is below 0.10 $\mu\text{g}/\text{cm}^2$. The coating is considered a non-Cr(VI) based coating.

-#1: According to the client's statement, the material of the sample(s) fall into exemption items 7(a) according to EU Directive 2011/65/EU: Lead in high melting temperature type solders (i.e. lead-based alloys containing 85% by weight of more lead), the test results are for reference only.

-#2: The test results are for reference only.

-According to the client's statement, the Company Name shown on Report in this report and the Company Name shown on Report in the report A2220154387101 are the Group-subsidary relations, the test result(s) of this report is/are presented in reference to the result(s) that reported in A2220154387101.

Note: The testing data and result(s) in this report is(are) just for scientific research, education, internal quality control and product development etc.

-*: Indicates the method(s)/ item(s) is/are not in CNAS accreditation scope.

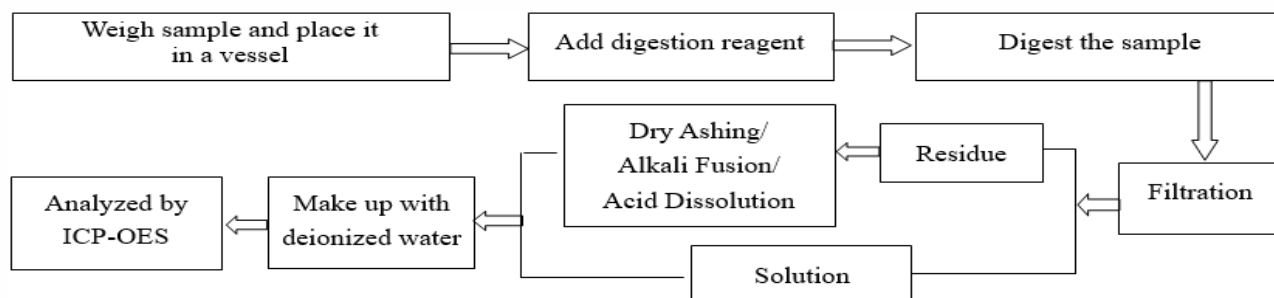
Test Report

Report No. A222015438710102

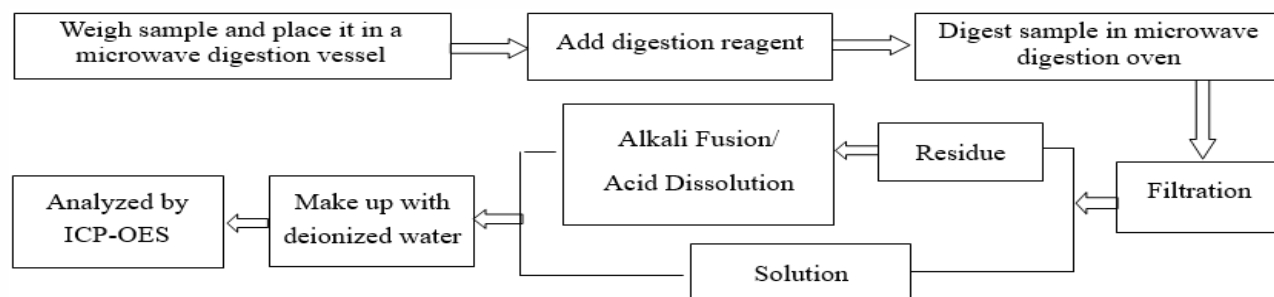
Page 7 of 10

Test Process

1. Lead (Pb), Cadmium (Cd), Chromium(Cr)

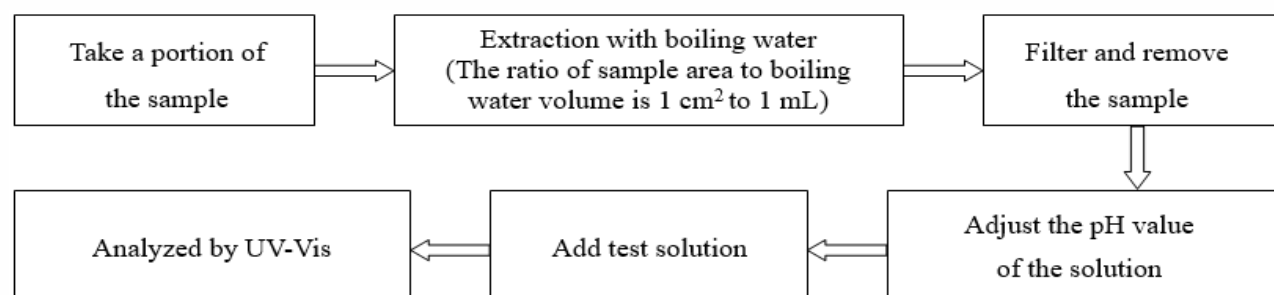


2. Mercury (Hg)

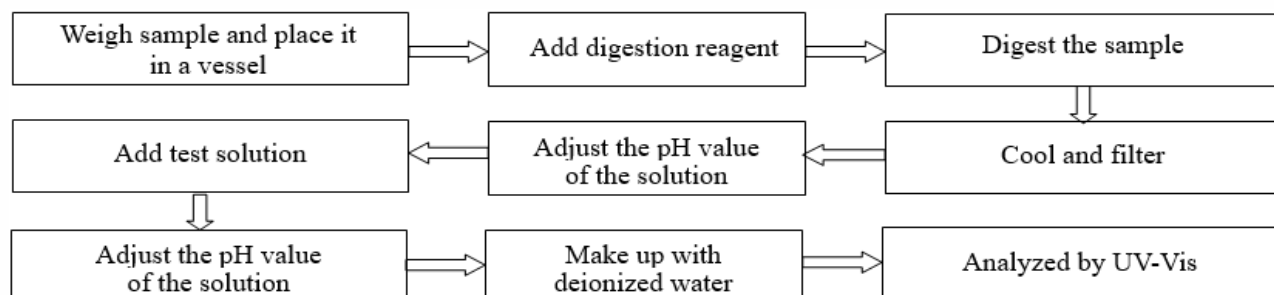


3. Hexavalent Chromium (Cr(VI))

(1) IEC 62321-7-1:2015



(2) IEC 62321-7-2:2017

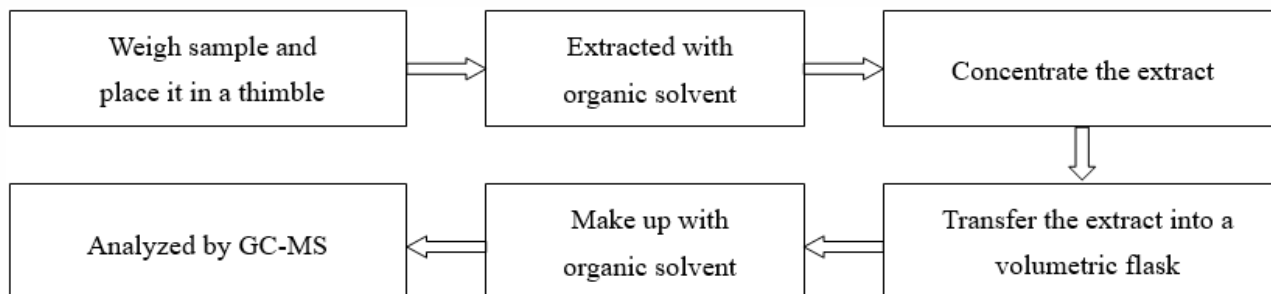


Test Report

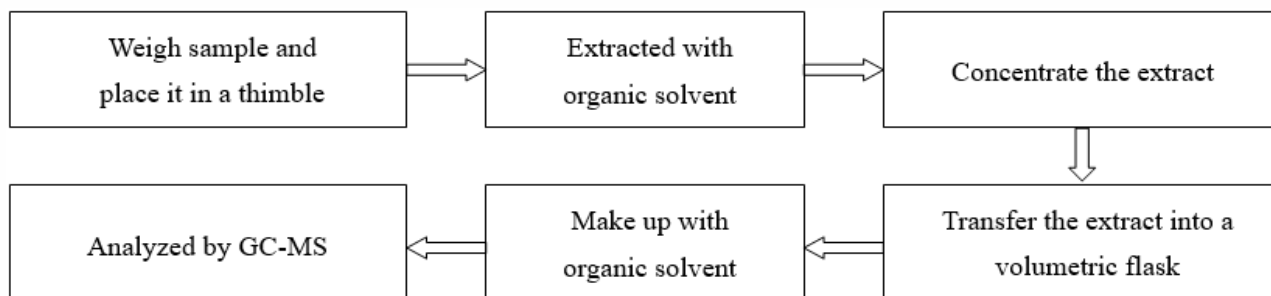
Report No. A222015438710102

Page 8 of 10

4. Polybrominated Biphenyls (PBBs), Polybrominated Diphenyl Ethers (PBDEs)



5. Phthalates (DBP, BBP, DEHP, DIBP)



Test Report

Report No. A222015438710102

Page 9 of 10

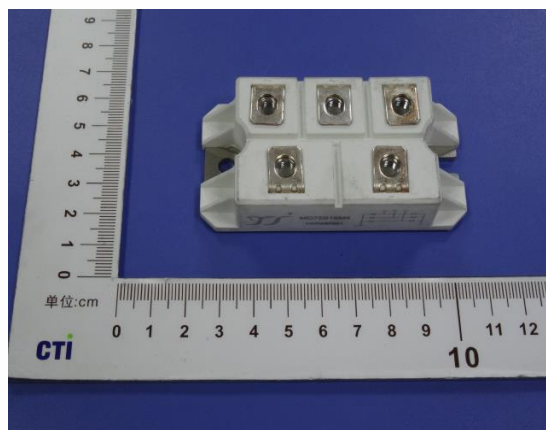
Photo(s) of the sample(s)

Final Product



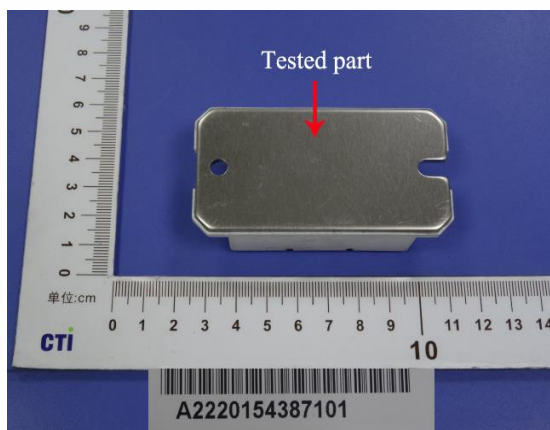
001

Final Product



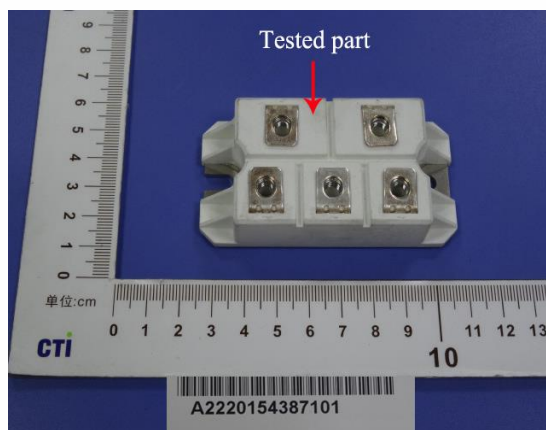
002

Tested part



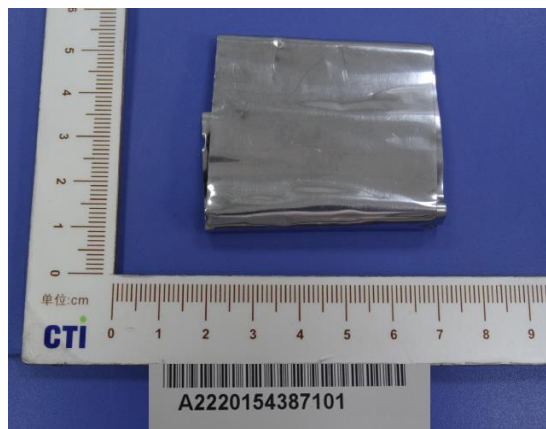
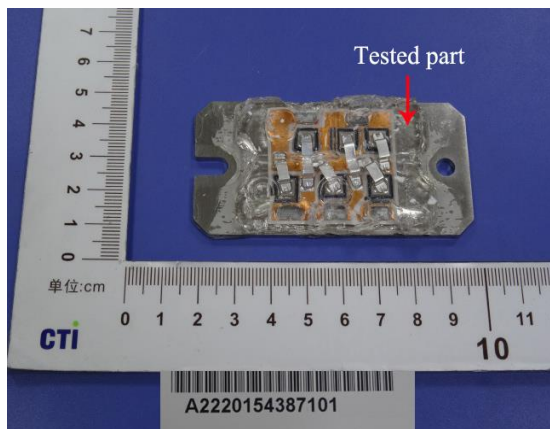
003

Tested part



004

Tested part



Test Report

Report No. A222015438710102

Page 10 of 10

Statement:

1. This report is considered invalid without approved signature, special seal and the seal on the perforation;
2. The Company Name shown on Report and Address, the sample(s) and sample information was/were provided by the applicant who should be responsible for the authenticity which CTI hasn't verified;
3. The result(s) shown in this report refer(s) only to the sample(s) tested;
4. Without written approval of CTI, this report can't be reproduced except in full;
5. In case of any discrepancy between the English version and Chinese version of the testing reports (if generated), the Chinese version shall prevail.

*** End of Report ***

Appendix

Client Reference Information

D1、D2、DA、M1、M2、NM2、M3、NM3、M4、M5、M7、M8、F3、F4N、F5、F6、FJ、C1、C2、L1、L2、T1、T2、D1N、MT、GJ、F1、F2、F2N、FS、P1、P2、P3、E1、E1A、E2、E2A、M9、T1A、T1D、F1N、T2A、C21、C3、E3、P4

Statement:

1. The Appendix Information was/were provided by the applicant who should be responsible for the authenticity which CTI hasn't verified.
2. The Appendix Information is/are the supplement(s) for the Report A222015438710102.